

POWERGUARD 91 IP PDU Series

PWG-9116-36-92-SIPH

Exagate PDU Based Power Metering Single Phase IP PDU

Exagate POWERGuard 91 Series IP Power Distribution Units, a power monitoring solution of Exagate, monitors total power on IP PDU and environmental risks in rack cabinets.

Monitoring

Current, voltage, frequency, temperature, humidity, air flow are some of the values that should be monitored and managed in a rack cabinet.

Setting Alarms

In case any of values monitored are out of minimum-maximum values defined by administrator, system gives alarm and informs predefined users via either an e-mail and /or SNMP etc...

Features

Metering	Voltage (V), Current (A), Frequency (f), Active Power (kW), Real Power (kVA), Energy (kWh), Power Factor(PF)
Metering per PDU	Yes
Metering per Branch Circuit Breaker	N/A
Metering per Outlet	No
Switching per Outlet	No
Metering Accuracy	+/- 1%
Management	SMTP; SNMP; Telnet; HTTPs; SSH; SMARTPack
LCD Display	Color graphic TFT display for any value and message displaying
Network Connection	RJ-45 (10/100 BaseT Ethernet)
Cascading	Yes
Supported Environmental Sensors	Temperature, Humidity

Operational Properties

Input Voltage	220-240 VAC , 50/60 Hz, 1 phase
Input Current	16 A
Power Capacity	3,7 kVA
Input Connection	IEC 60320 C20
Output Sockets	Six (6) x C13 and Two (2) x C19 outlets
Maximum Output Current (outlet)	IEC-320-C13: 10 A;
Maximum Output Current (phase)	16A
Maximum Output Current (branch circuit)	N/A
Branch Circuit Protection	N/A

Physical Properties

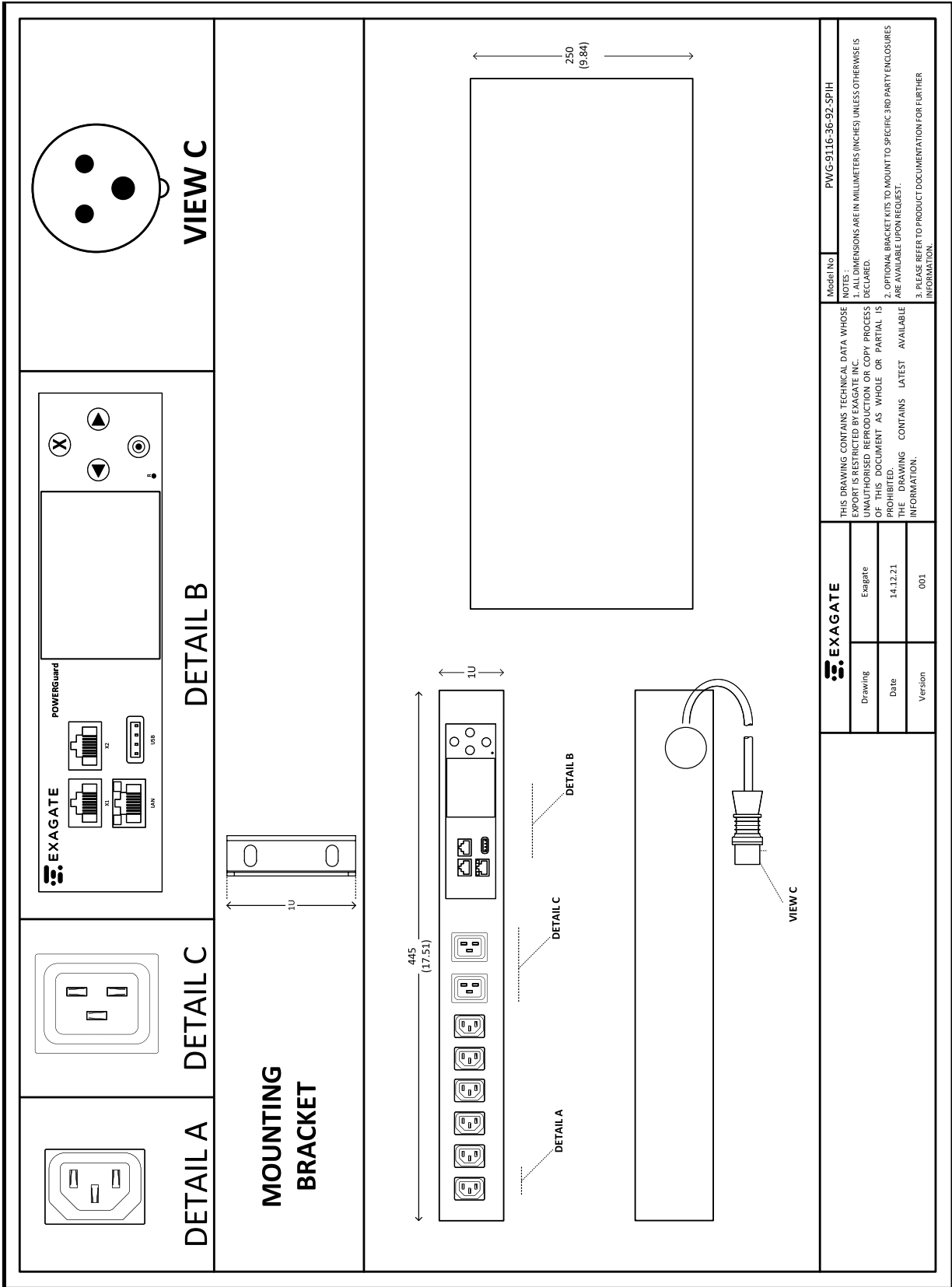
Dimensions (H x W x D)	1U, (440 x 220 x 44) mm
Color	Black powder coating
Weight	Approx. 2 kg

Environmental Properties

Operating Temperature Range	0-65 °C
Operating Humidity Range	0-85 % RH
Storage Temperature Range	0-75 °C
Storage Humidity Range	0-90 % RH

Compatible Sensors

SYSG2010	Temperature & Humidity Sensor
SYSG2020	Temperature Sensor



PRODUCT SKU #	DESCRIPTION
PWG-9116-36-92-SIPH	POWERGuard IP Power Distribution Unit with PDU Based Metering

LIMITED PRODUCT WARRANTY

All Exagate products are covered with 2 years limited guarantee from the date of original purchase. (Warranty duration may change depending on your country) Your sales or delivery receipt, showing the date of purchase of product is your proof of purchase. Exagate is obliged to repair or replace the defective hardware (or any part of it's) with no charge to owner.

Conditions Void of Warranty

- Damages on unit, cable or screen.
- Defections due to electrical wiring and/or city network.
- Interference to unit by non-authorized staff.
- Any problems caused by act of nature.
- Misusage of unit stated by the user manual.
- Removal or destruction of serial number, warranty labels.
- Any kind of modifications on unit.